



City of Caldwell

Wastewater Treatment Plant

208 Johnson Lane

Caldwell, ID 83605

Monthly Receiving Water Log

Boise River Outflow

Observation Date: November 25, 2025

Observation Time: 0816 AM

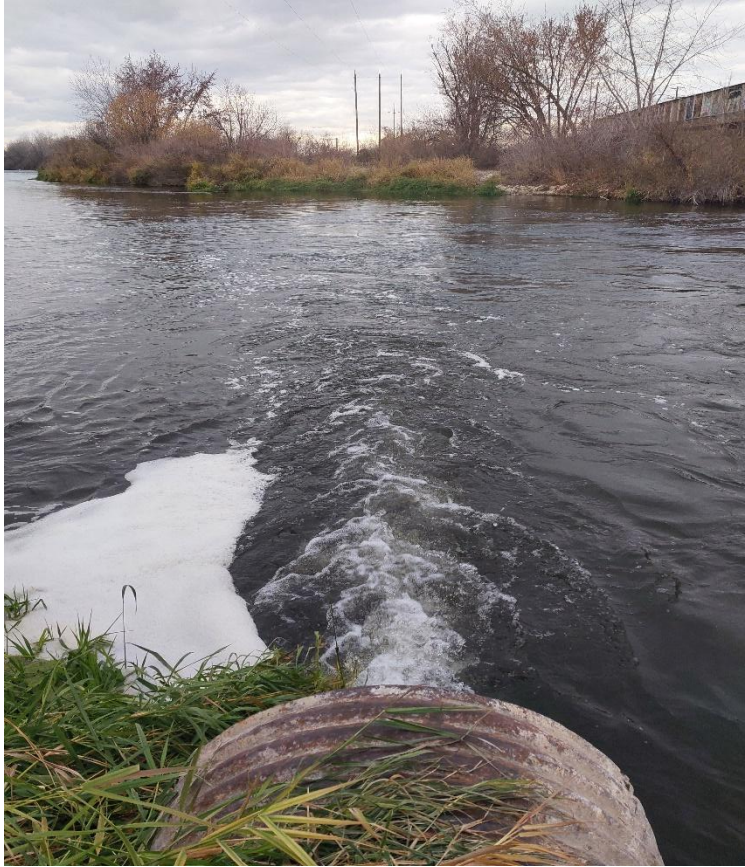
Observer(s): Nick and Richard

Floating, suspended, or submerged matter present? Yes ☐ No ☒

If yes, describe:

Photos were taken with a Digital Camera. Raw photos are saved in the DMR folder for the city of Caldwell and archived to Laserfiche.





DESCRIPTION: Downstream

Latitude 43°40'39.97", Longitude 116°42'19.78" NAD83
Canyon County, Idaho, Hydrologic Unit 17050114
Datum of gage: 2,347 feet above NAVD88.

DESCRIPTION: Upstream

Latitude 43°40'38.47", Longitude 116°42'04.07" NAD83
Canyon County, Idaho, Hydrologic Unit 17050114
Drainage area: 3,363 square miles
Contributing drainage area: 3,363 square miles,
Datum of gage: 2,337.11 feet above NAVD88.