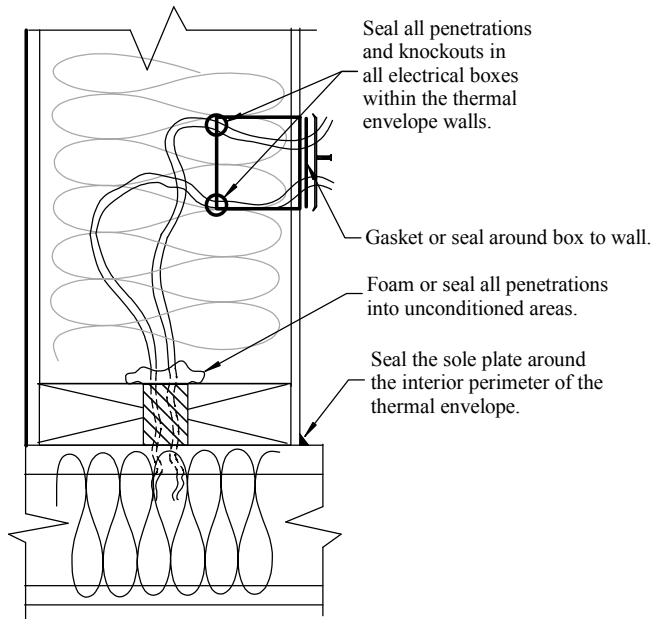


SEALING INSPECTION MUST BE DONE AT THE FRAMING INSPECTION WALLS

- A. Peel insulation apart and stuff half behind piping and wiring and the other half in front of piping and wiring. This prevents compression to insulation.
- B. Make a slice in the insulation on the front (facing interior) side, the insulation is then stuffed behind the piping and wiring pulling the slice to the front and wrapping around the piping and wiring.
- C. This demonstrates the incorrect way to install insulation. Buildings must maintain an energy efficiency level required through the International Energy Conservation Code. To maintain the appropriate level of efficiency, the required R-value for insulation must be maintained throughout. Compressing insulation behind piping or wiring dramatically reduces the overall R-value, and is not permitted.



208-455-3024

Fax: 208-455-3050

Department of Building Safety

TITLE
TYPICAL ROUGH SEALING AND INSULATION REQUIREMENTS

SIZE	CAGE CODE	DWG NO	08-10	REV
SCALE	NTS	SHEET	1	